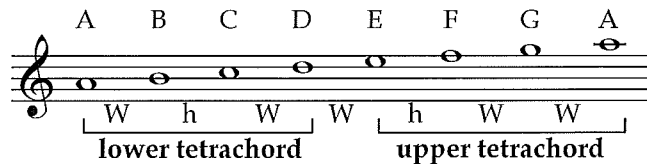


Section 2.4

MINOR SCALES: TWO ROADS

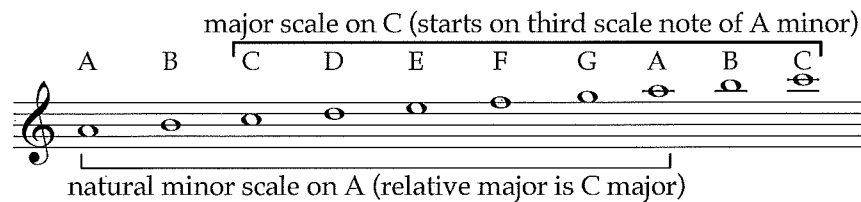
Minor scale

The most common minor scale, the **natural minor scale**, follows the pattern of half steps and whole steps formed by the white piano keys from A up to the next A: whole, half, whole; then whole; then half, whole, whole.



Relative keys

Relative keys are any major scale and natural minor scale that share a key signature. The **third note** of the minor scale is the first note of the **relative major** with the same key signature. For example, C is the third scale note of A minor. C major and A minor are relative keys sharing a key signature with no flats or sharps. Remember: **Relatives at a family reunion look alike, and relative key signatures "look alike" also.**

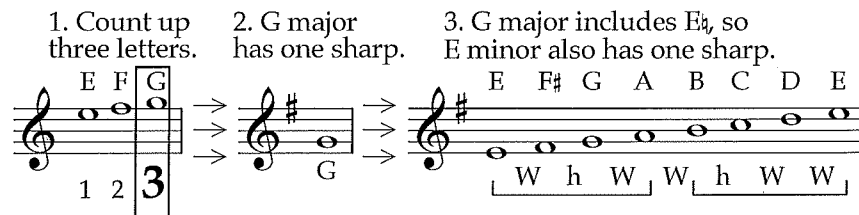
Road one:
relative minor

There are two roads to find key signatures for minor scales: relative and parallel. The example below illustrates the **relative minor** method for spelling E minor.

STEP 1: Count up **three** letter names to find the relative major.

STEP 2: Spell the relative major key signature.

STEP 3: Adjust if necessary to match the minor scale you want.



Relative minor with adjustment

Sometimes counting up three letters gives a major key that doesn't fit with the minor key you want. C minor is a good example. Counting up from C gives E: C, D, E. E major has four sharps, including C **sharp**. Since we want C **natural**, not C sharp, we need to use the key signature for E **flat** major (three flats) instead of E major.

1. Count up three letters.
 2. E major has four sharps.
 3. E major includes C#, not C_n, so use the E_b major key sig. instead.

Road two: parallel minor

Parallel keys share the same starting note (called the tonic). To find the natural minor notes using the **parallel key**, write a major scale on the same note, then **lower 3, 6, and 7** using accidentals. Although the parallel and relative methods both work, minor keys should be **memorized**.

E major = 4 # **E minor = 1 #**

Lower steps 3, 6, and 7 with accidentals.

Melodic minor

Melodic minor is **natural minor** with steps 6 and 7 raised going up, but like **natural minor** going down. Notice the F sharp in the key for E minor.

Harmonic minor

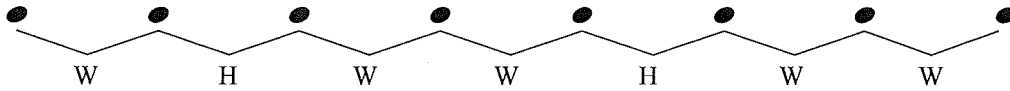
Harmonic minor is natural minor with **step 7 raised** (only) both up and down. Again, the F sharp reflects the key signature for E natural minor.

Name _____

Date _____

Natural Minor Scale Ia -

All Natural Minor scales are made up of the following pattern of whole steps and half steps:



Add sharps or flats to the exercises below to create Natural Minor scales.
Use the pattern of whole and half steps to determine which accidentals you will need to add.

Example

W H W W H W W

1

2

3

4

5

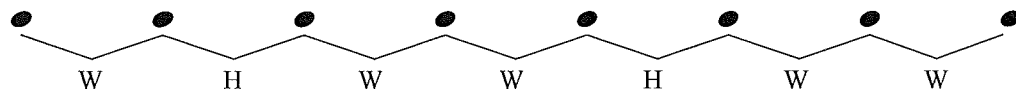
6

Name _____

Date _____

Natural Minor Scale Ia - b

All Natural Minor scales are made up of the following pattern of whole steps and half steps:



Add sharps or flats to the exercises below to create Natural Minor scales.

Use the pattern of whole and half steps to determine which accidentals you will need to add.

Example

W H W W H W W

1

2

3

4

5

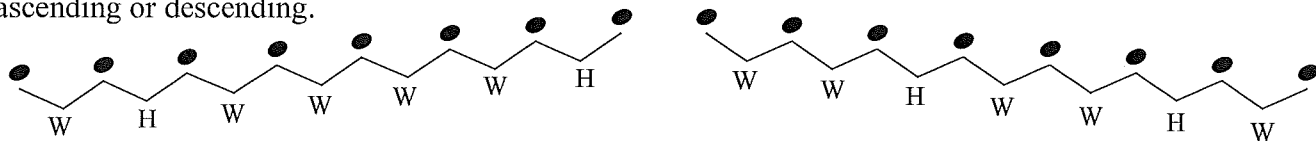
6

Name _____

Date _____

Melodic Minor Scale Ia - b

The pattern of whole and half steps used in the Melodic Minor scale varies depending if the scale is ascending or descending.



Compare the ascending pattern with the descending pattern.

The descending pattern is the same as the pattern for the Melodic Minor scale

Add sharps or flats to the exercises below to create Melodic Minor scales.

Use the pattern of whole and half steps to determine which accidentals you will need to add.

Example

The example shows a Melodic Minor Scale Ia in bass clef. The ascending pattern is shown with interval labels W, H, W, W, W, W, H. The descending pattern is shown with interval labels W, W, H, W, W, H, W. Accidentals (sharps and flats) are placed on the notes to create a scale that follows the interval pattern.

1

Exercise 1: A blank bass clef staff for writing a Melodic Minor Scale Ia.

2

Exercise 2: A blank bass clef staff for writing a Melodic Minor Scale Ia.

3

Exercise 3: A blank bass clef staff for writing a Melodic Minor Scale Ia.

4

Exercise 4: A blank bass clef staff for writing a Melodic Minor Scale Ia.

5

Exercise 5: A blank bass clef staff for writing a Melodic Minor Scale Ia.

6

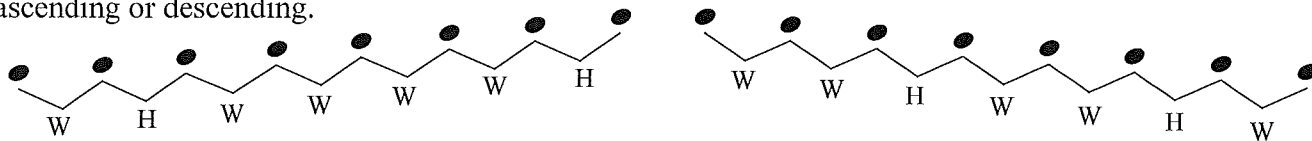
Exercise 6: A blank bass clef staff for writing a Melodic Minor Scale Ia.

Name _____

Date _____

Melodic Minor Scale Ia -

The pattern of whole and half steps used in the Melodic Minor scale varies depending if the scale is ascending or descending.



Compare the ascending pattern with the descending pattern.

The descending pattern is the same as the pattern for the Melodic Minor scale

Add sharps or flats to the exercises below to create Melodic Minor scales.

Use the pattern of whole and half steps to determine which accidentals you will need to add.

Example

The example shows a Melodic Minor scale in G minor. The ascending pattern is G-A-Bb-C-D-E-F-G, and the descending pattern is G-F-E-D-C-Bb-A-G. The intervals are labeled as W, H, W, W, W, W, H.

1

2

3

4

5

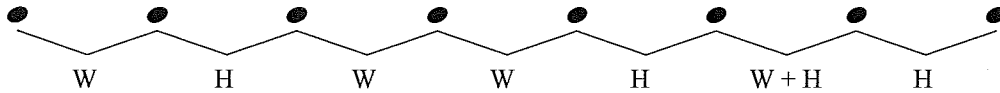
6

Name _____

Date _____

Harmonic Minor Scale Ia - b

All Harmonic Minor scales are made up of the following pattern of whole steps and half steps:



Add sharps or flats to the exercises below to create Harmonic Minor scales.

Use the pattern of whole and half steps to determine which accidentals you will need to add.

Example

Example of a Harmonic Minor scale Ia in bass clef. The scale is written on a five-line staff. The notes are G2, A2, Bb2, C3, D3, E3, F#3, and G3. Below the staff, the interval pattern is labeled: W, H, W, W, H, W+H, H.

1

Exercise 1: A five-line staff in bass clef with notes G2, A2, B2, C3, D3, E3, F3, and G3. The interval pattern is W, H, W, W, H, W+H, H.

2

Exercise 2: A five-line staff in bass clef with notes G2, A2, B2, C3, D3, E3, F3, and G3. The interval pattern is W, H, W, W, H, W+H, H.

3

Exercise 3: A five-line staff in bass clef with notes G2, A2, B2, C3, D3, E3, F3, and G3. The interval pattern is W, H, W, W, H, W+H, H.

4

Exercise 4: A five-line staff in bass clef with notes G2, A2, B2, C3, D3, E3, F3, and G3. The interval pattern is W, H, W, W, H, W+H, H.

5

Exercise 5: A five-line staff in bass clef with notes G2, A2, B2, C3, D3, E3, F3, and G3. The interval pattern is W, H, W, W, H, W+H, H.

6

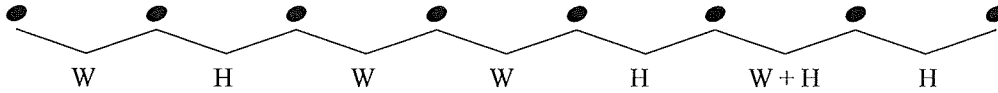
Exercise 6: A five-line staff in bass clef with notes G2, A2, B2, C3, D3, E3, F3, and G3. The interval pattern is W, H, W, W, H, W+H, H.

Name _____

Date _____

Harmonic Minor Scale Ia -

All Harmonic Minor scales are made up of the following pattern of whole steps and half steps:



Add sharps or flats to the exercises below to create Harmonic Minor scales.

Use the pattern of whole and half steps to determine which accidentals you will need to add.

Example

W H W W H W+H H

1

2

3

4

5

6